

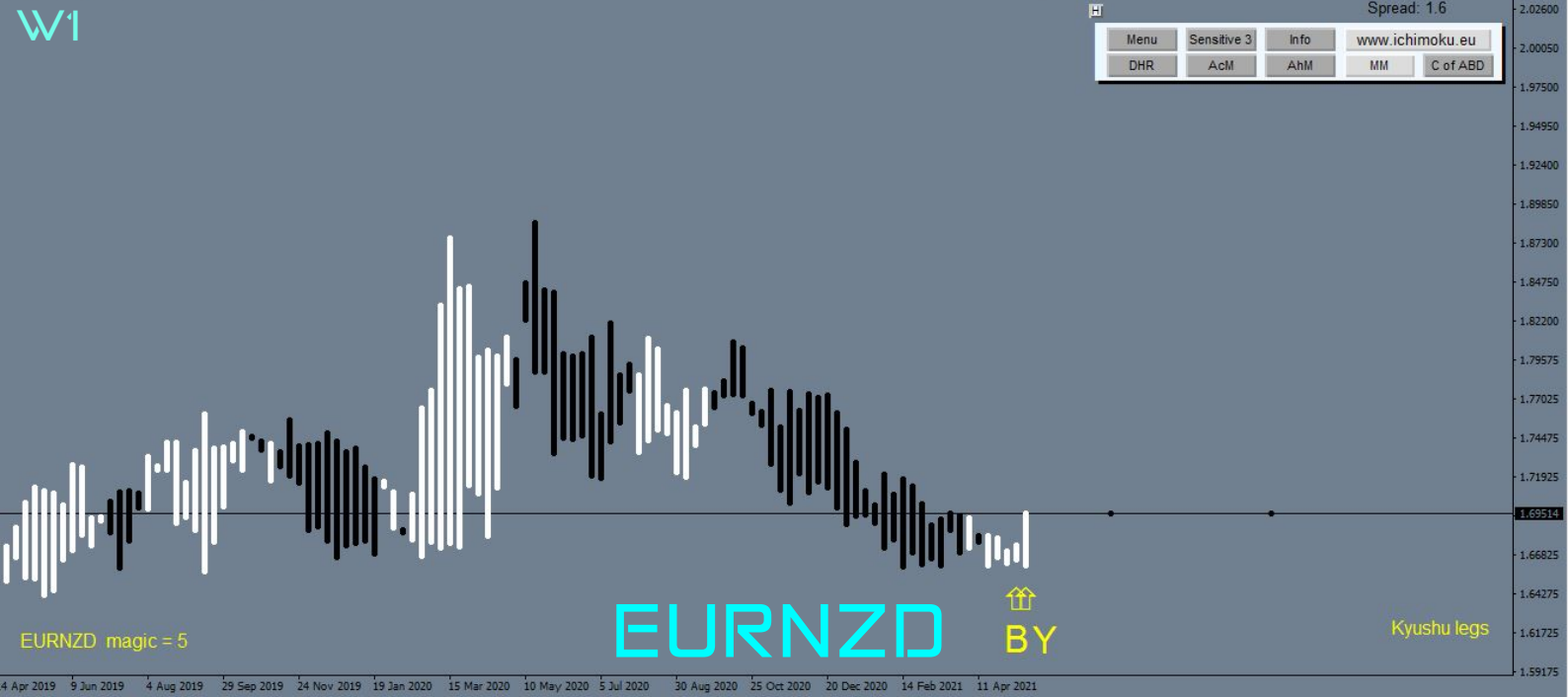


ichimoku.eu

is a lot more than just an indicator...



EURNZD, Weekly 1.67525 1.70366 1.67406 1.69514



Ichimoku on high time frame intervals.

Practical use of weekly candles.

Value: EURNZD

A sequence of signals in the W1 chart

//

Updated analysis from April 6, 2021.

EUR/NZD analysis update from April 6, 2021. At that time there was a visible upward impulse on the daily D1 chart. A white bar was visible on the weekly Kyushu Legs, which was not a signal. There was a correction, followed by a wave "Y" (transition wave) - price stiffening.

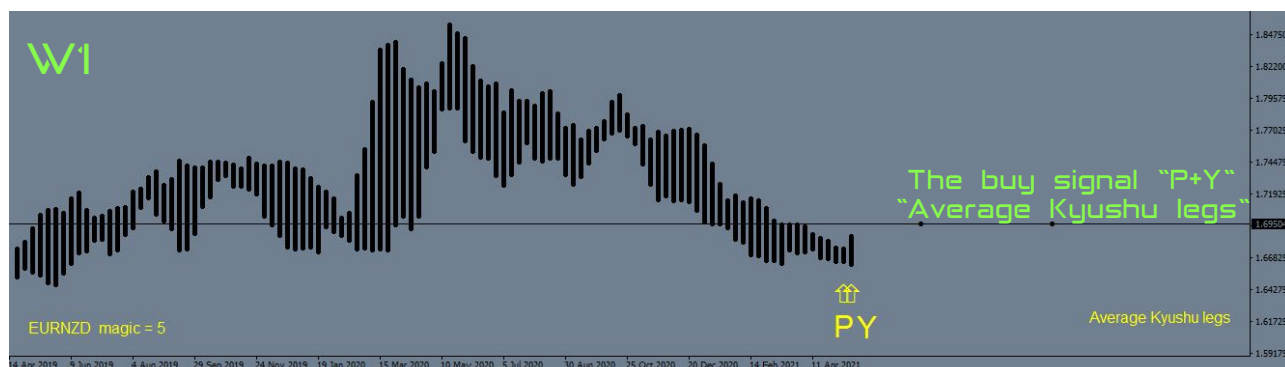
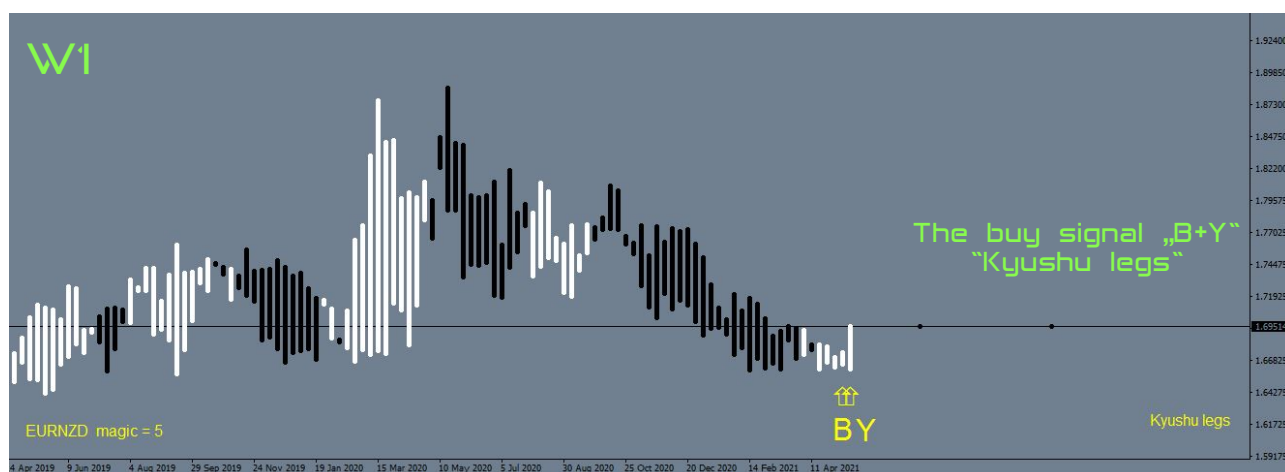
In this case, the half price of the range should be determined. The half price range helps us to calculate the cycles inside this range and the expected moment of breakout. 19 May (33rd day) price reaches the "Y" range in wave "Y". If the price crosses this range then with high probability we can say that the consolidation has come to an end.

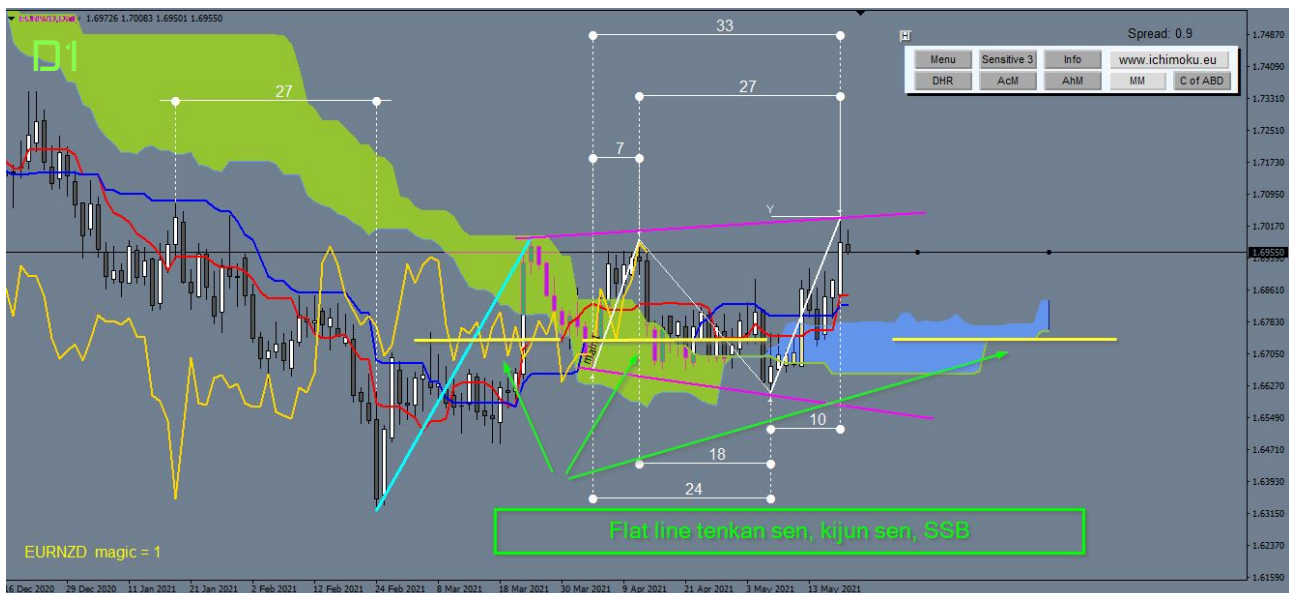
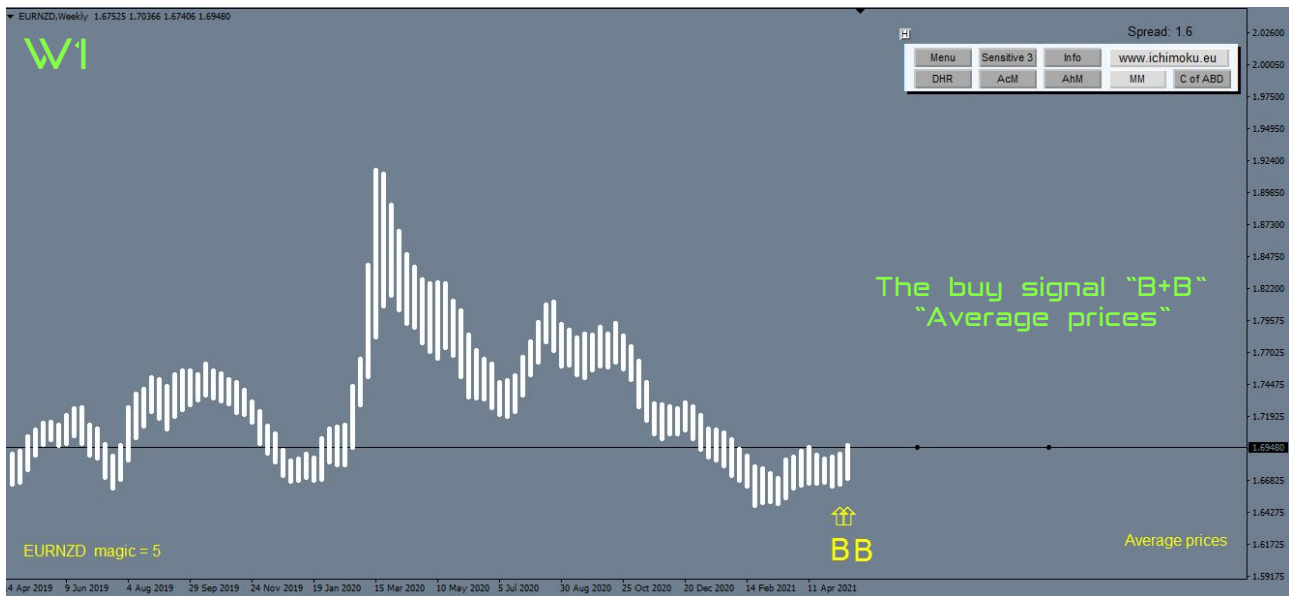
It is now necessary to observe the next cycle. Possible end of the correction and reaction to the 1/2 range. The formation of wave "N" will allow to determine the next cycles and the place of the range for the price.

The analysis was compiled by:

Bogdan Kobak コバック・ボフダン

Piotr Fryjewicz フリエウイッチュ・ピョートル





DISCLAIMER: This material is provided as a general marketing communication for information purposes only and does not constitute an independent investment research. Nothing in this communication contains, or should be considered as containing, an investment advice or an investment recommendation or a solicitation for the purpose of buying or selling of any financial instrument. All information provided is gathered from reputable sources and any information containing an indication of past performance is not a guarantee or reliable indicator of future performance.

RISK WARNING: Information and appearing entries are of an educational nature and are not a "recommendation" within the meaning of the Regulation of the Minister of Finance of 19 October 2005 on information constituting recommendations regarding financial instruments or their issuers (Journal of Acts Year 2005 No. 206, pos. 715). Investing in the Forex market using the finance leverage carries a high risk and there is a possibility of losing some or all of the funds invested.

Renunciation: The author of this elaboration and the owner of www.ichimoku.eu does not take any responsibility for your trading decisions. Everything presented here was created only for training and teaching purposes.

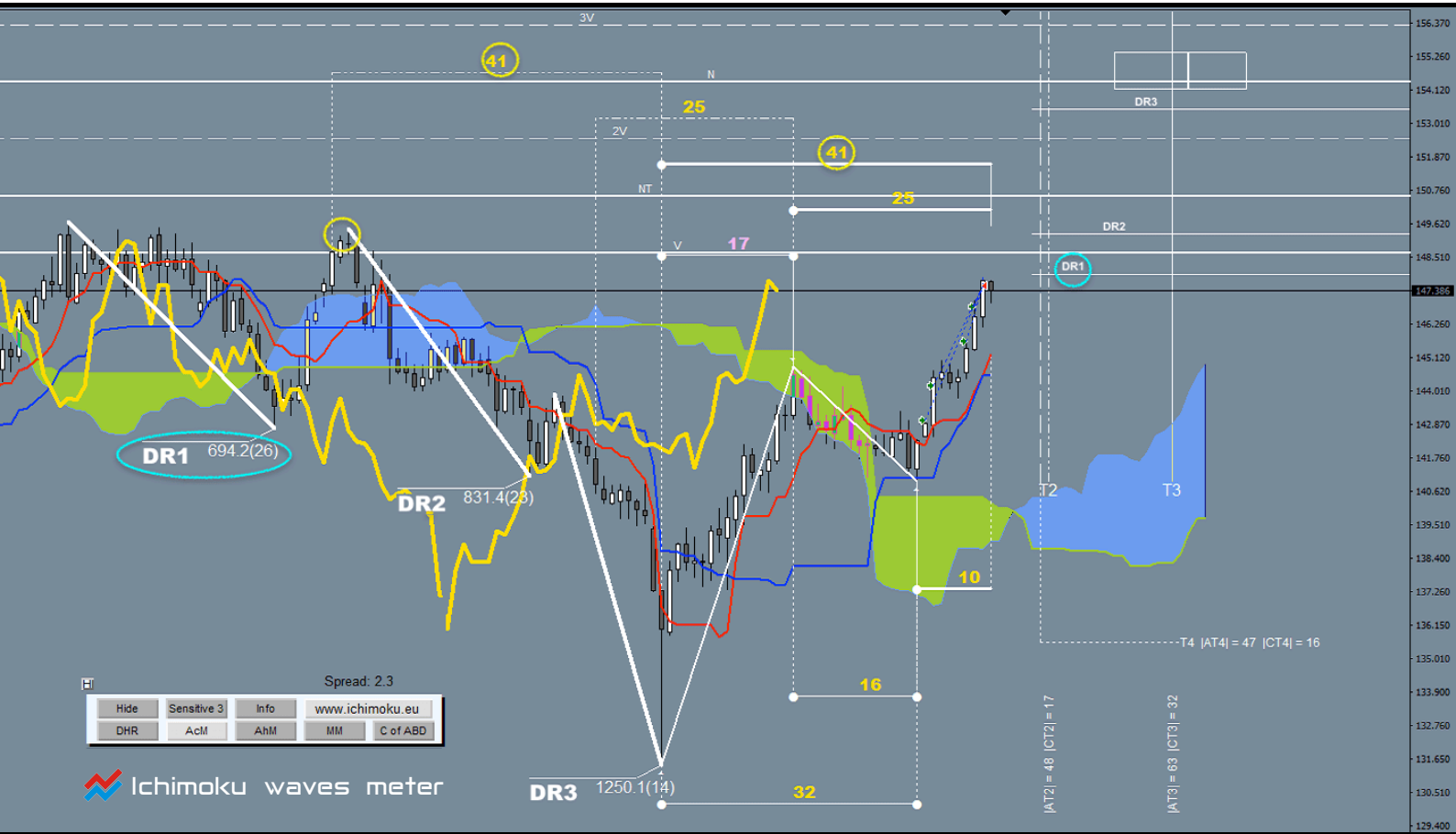
www.ichimoku.eu

Ichimoku Ltd., location: Katowice, Aleje Bolesława Krzywoustego 4/1, ZIP code 40-870, Poland, registered in the National Court Register by the District Court of Katowice-East in Katowice, The 8th Economical Department NCR, NCR no. 0000771061, with the share capital of 5.000,00 PLN, NIP no. 6342950794. REGON no. 382539071



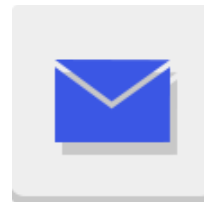
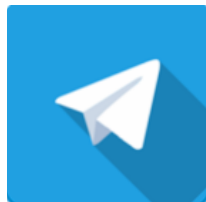
ichimoku.eu

is a lot more than just an indicator...



Ichimoku Ltd.

You'll find us on:



Disclaimer

This material is provided as a general marketing communication for information purposes only and does not constitute an independent investment research. Nothing in this communication contains, or should be considered as containing, an investment advice or an investment recommendation or a solicitation for the purpose of buying or selling of any financial instrument. All information provided is gathered from reputable sources and any information containing an indication of past performance is not a guarantee or reliable indicator of future performance.