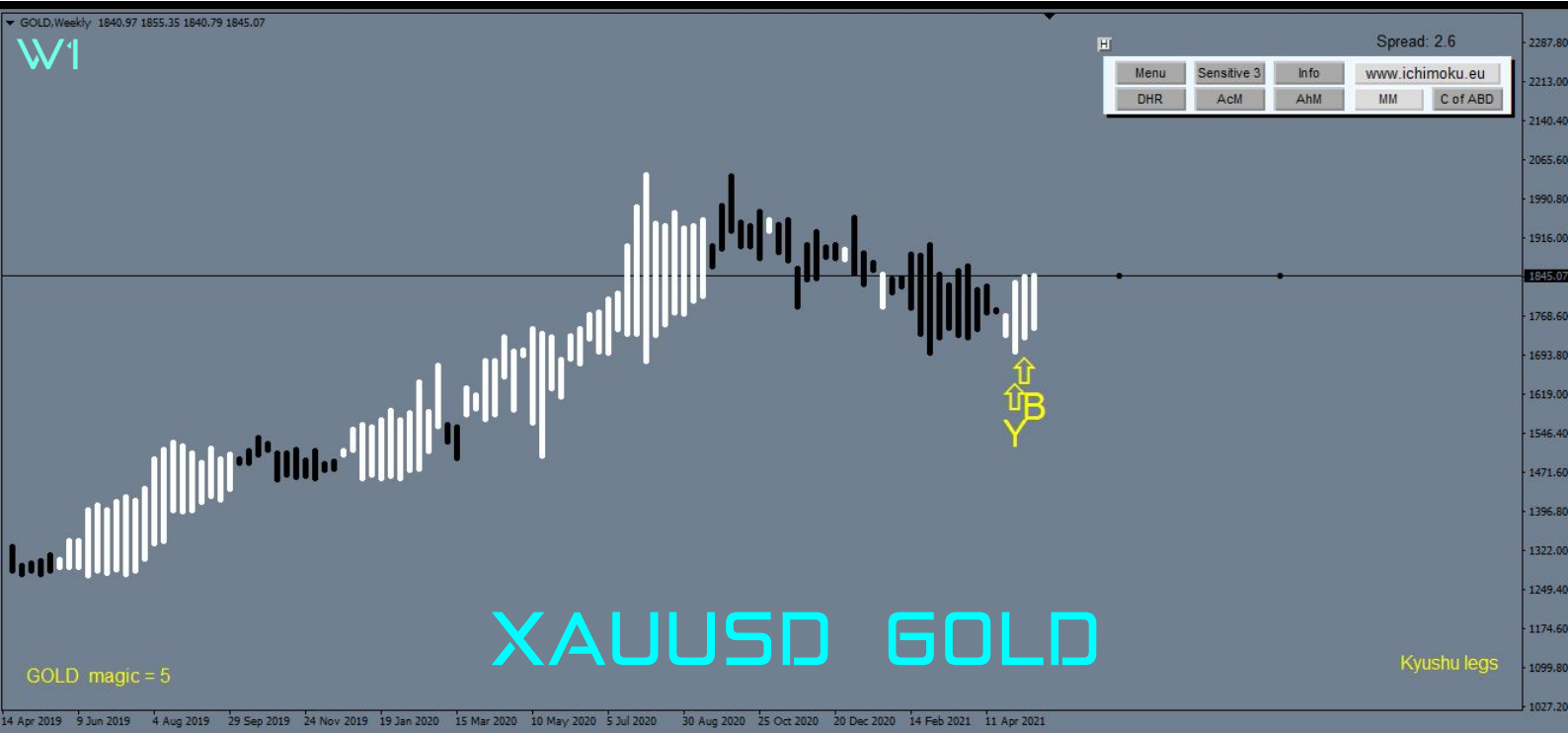




ichimoku.eu

is a lot more than just an indicator...



Ichimoku on high time frame intervals.

Practical use of weekly candles.

Value: XAUUSD GOLD

A sequence of signals in the W1 chart

//

Updated analysis from April 8 and May 6, 2021.

Currently, another signal has appeared on the "Kyushu Legs" "Y+B" and on the "Average Kyushu Legs" "Y+B".

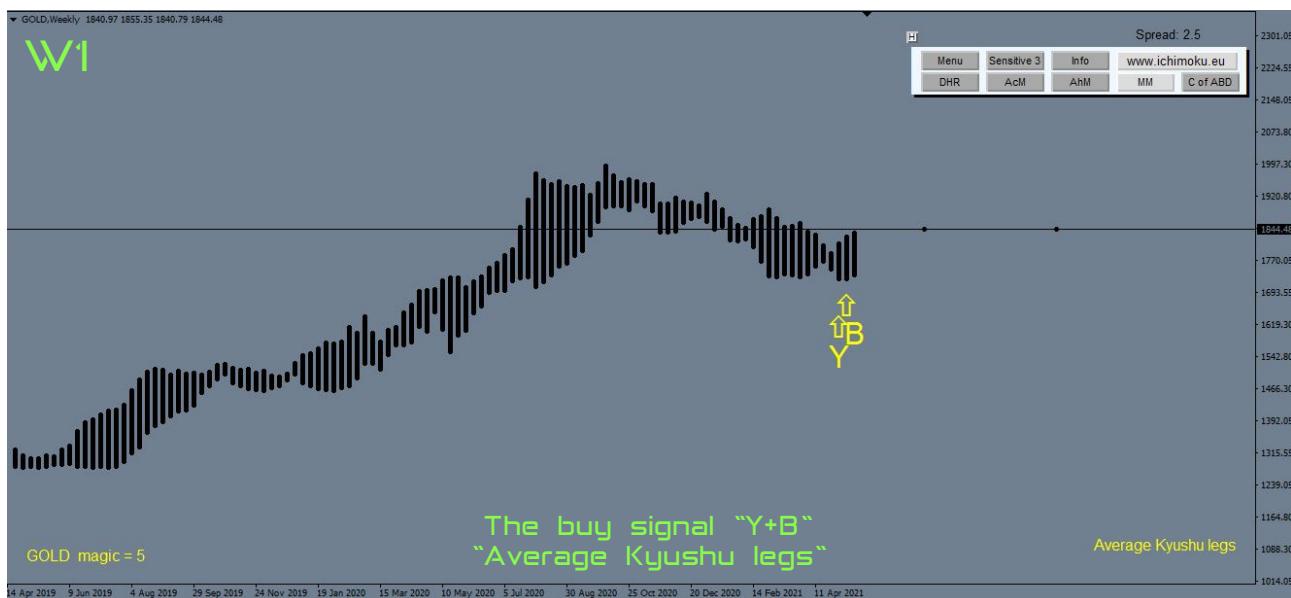
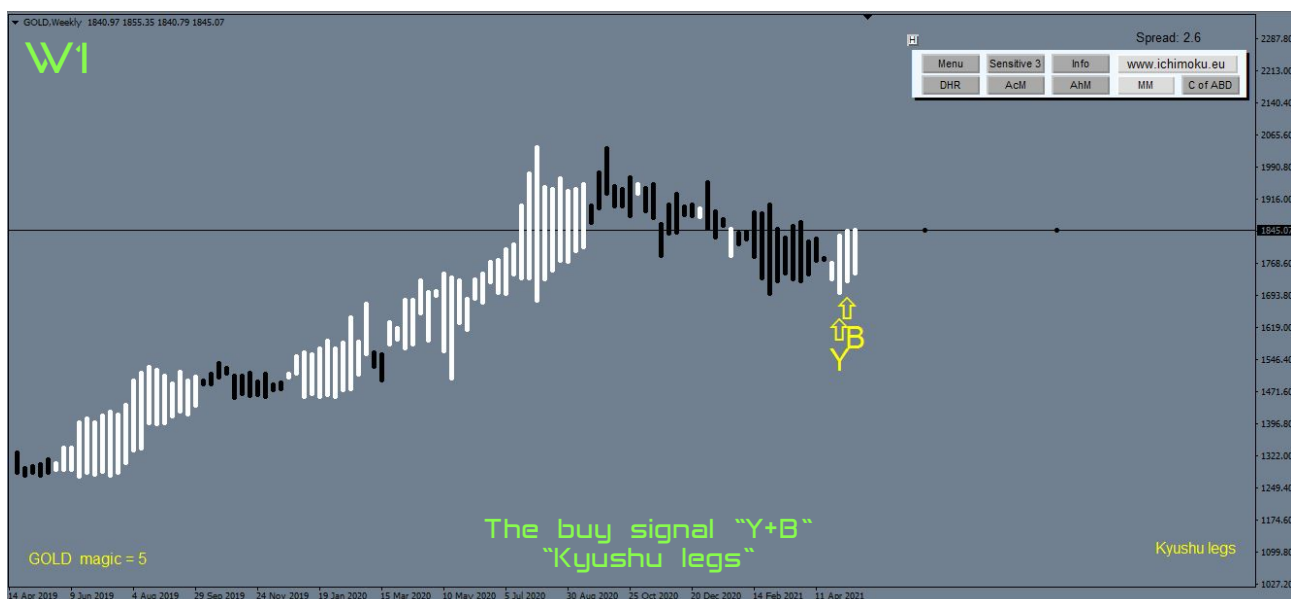
The "Average Prices" chart confirms the trend with each successive bar.

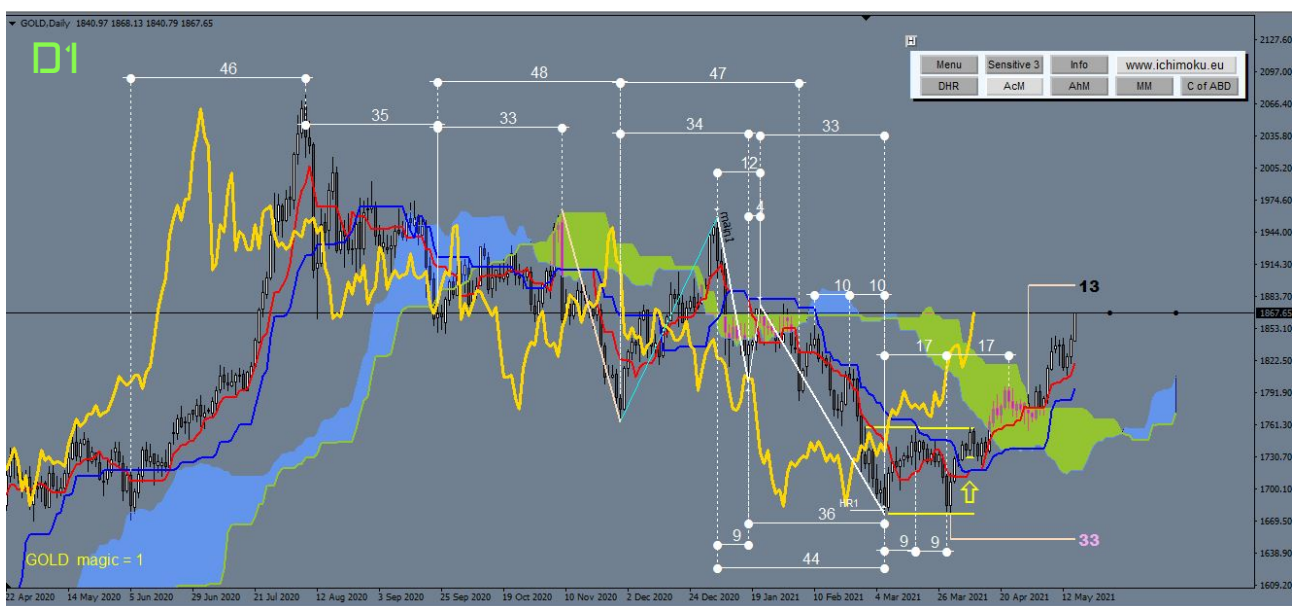
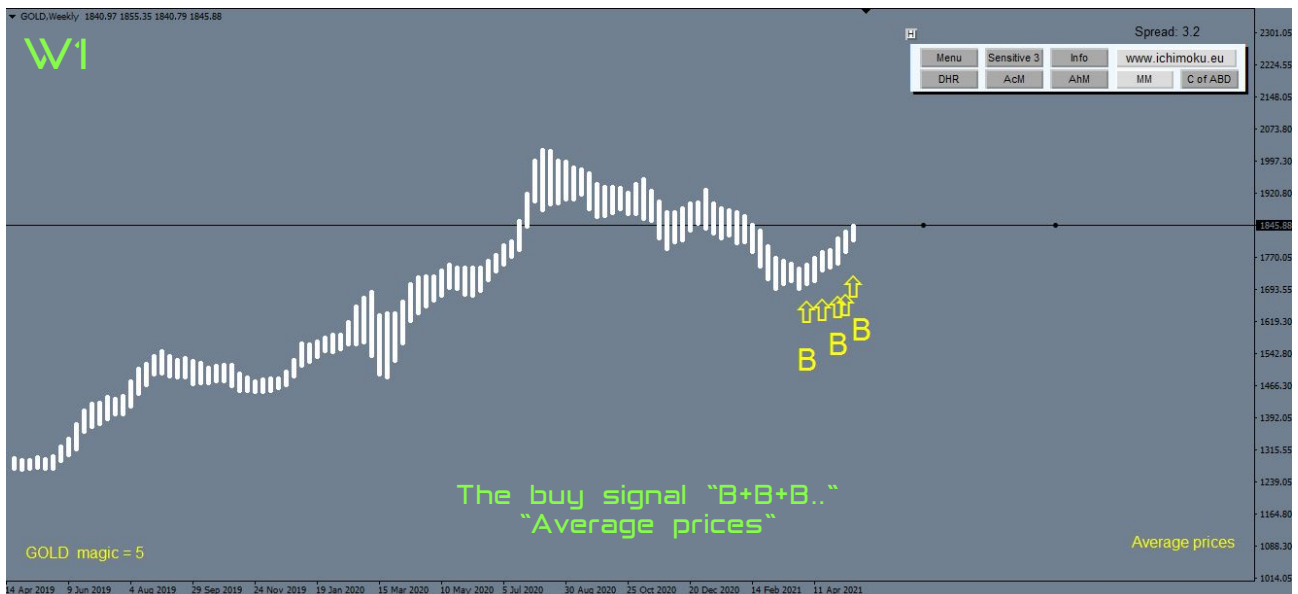
On the D1 interval, it is possible to delineate successive "Sasaki" patterns with increasingly higher ranges (after realising the range E that is the range/frame width, the next likely range will be 2E).

The analysis was compiled by:

Bogdan Kobak コバック・ボフダン

Piotr Fryjewicz フリエウイッチュ・ピョートル





DISCLAIMER: This material is provided as a general marketing communication for information purposes only and does not constitute an independent investment research. Nothing in this communication contains, or should be considered as containing, an investment advice or an investment recommendation or a solicitation for the purpose of buying or selling of any financial instrument. All information provided is gathered from reputable sources and any information containing an indication of past performance is not a guarantee or reliable indicator of future performance.

RISK WARNING: Information and appearing entries are of an educational nature and are not a "recommendation" within the meaning of the Regulation of the Minister of Finance of 19 October 2005 on information constituting recommendations regarding financial instruments or their issuers (Journal of Acts Year 2005 No. 206, pos. 715). Investing in the Forex market using the finance leverage carries a high risk and there is a possibility of losing some or all of the funds invested.

Renunciation: The author of this elaboration and the owner of www.ichimoku.eu does not take any responsibility for your trading decisions. Everything presented here was created only for training and teaching purposes.

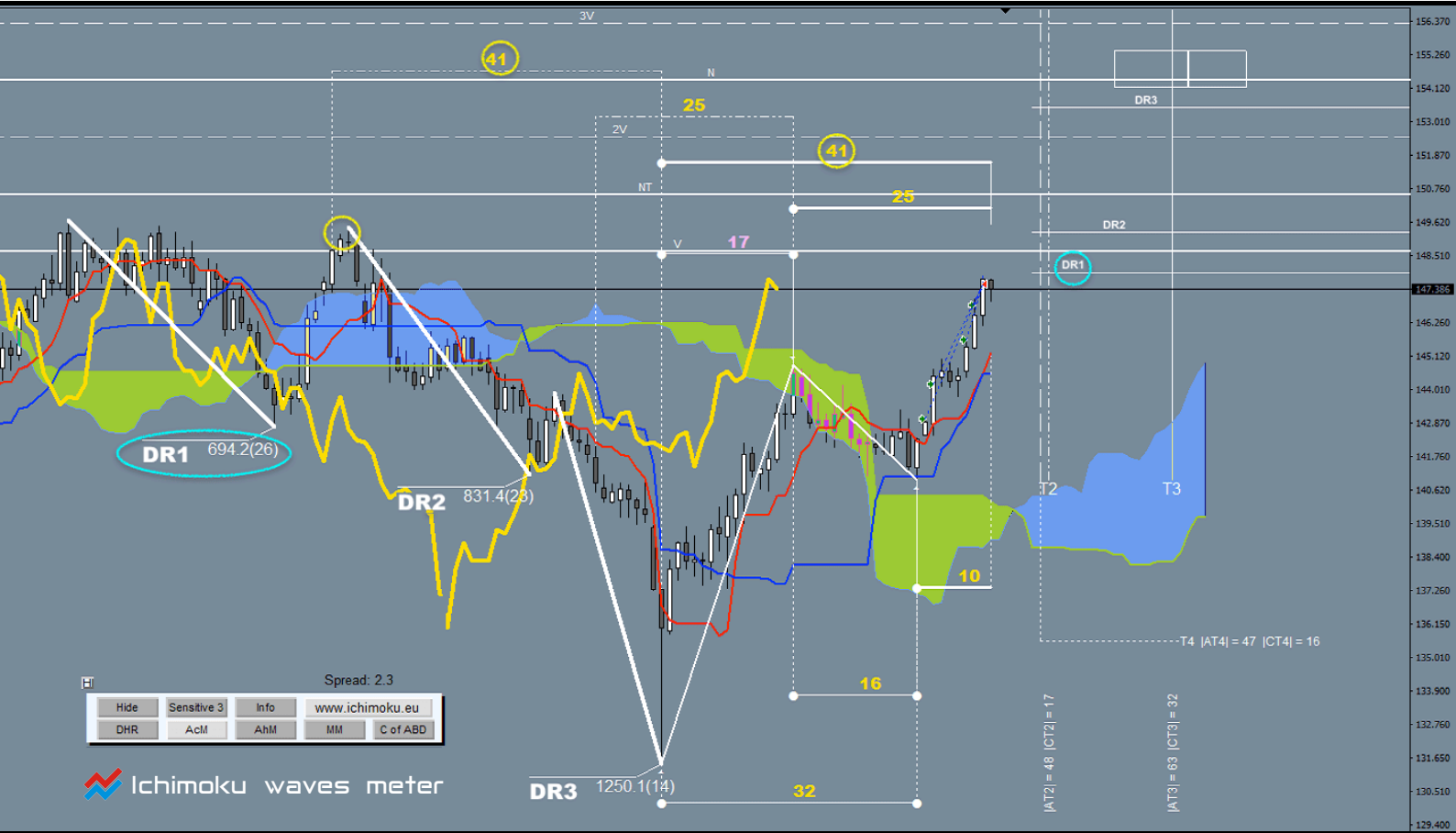
www.ichimoku.eu

Ichimoku Ltd., location: Katowice, Aleje Bolesława Krzywoustego 4/1, ZIP code 40-870, Poland, registered in the National Court Register by the District Court of Katowice-East in Katowice, The 8th Economical Department NCR, NCR no. 0000771061, with the share capital of 5.000,00 PLN, NIP no. 6342950794. REGON no. 382539071



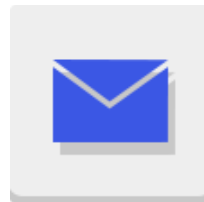
ichimoku.eu

is a lot more than just an indicator...



Ichimoku Ltd.

You'll find us on:



Disclaimer

This material is provided as a general marketing communication for information purposes only and does not constitute an independent investment research. Nothing in this communication contains, or should be considered as containing, an investment advice or an investment recommendation or a solicitation for the purpose of buying or selling of any financial instrument. All information provided is gathered from reputable sources and any information containing an indication of past performance is not a guarantee or reliable indicator of future performance.